

At NAPO-LA, we never want you to receive unwanted emails from us. You're receiving this email because of your relationship with NAPO-LA. Please [confirm](#) your continued interest in receiving email from us.

You may [unsubscribe](#) if you no longer wish to receive our emails.

THE LOS ANGELES ORGANIZER



September/October 2014

Volume 20, Issue 11

In This Issue

[NAPO-LA Calendar](#)

[President's Message](#)

[September Chapter Meeting](#)

[NAPO-LA News](#)

[Membership Renewals](#)

[Partner with Us](#)

[Golden Circle](#)

[Volunteer Opportunities](#)

[NAPO-LA POLA](#)

[ICD News](#)

[Clutter Support Group](#)

[Neighborhood Groups](#)

[Newsletter Guidelines](#)

NAPO-LA Calendar

September 18	POLA Registration Deadline	October 1	Renewals Begin
September 22		October 2	NAPO-LA Field Trip
12:30 pm	Board Meeting	October 27	
3:00 pm - 5:00 pm	POLA Class (check-in 2:45 pm)	3:00 pm	Board Meeting
6:15 pm	Chapter Meeting	6:15 pm	Chapter Meeting

President's Message

CELEBRATING SUCCESS

Regina F. Lark, Ph.D, CPO®, CPO-CD®

The day was sunny and warm, but NAPO-LA members: Janice Reid, Mary Anne Lantieri, Milena Kazarian, Carol Pardoe, Toni Scharff, and Fay Wolf, joined me in the basement of an older Los Angeles building. Hours spent de cluttering and organizing the "cages" for the Downtown Women's Center (D created good memories for the organizers, and [heartfelt thanks](#) from the DV staff. Special thanks to Carol Pardoe for bringing two friends who worked h [read more](#)

NAPO-LA September Chapter Meeting

BARB SCHMIT WITH PENDAFLEX PRESENTS "Products for Organizers & Their Clients"

Barb has spent 30 years working with the office supplies industry. The first 1 years were with a large paper manufacturer. The past 15 years have been v Esselte/TOPS, which makes several brands: Pendaflex, Oxford, Ampad, TC Globe Weis, and Cardinal. Office productivity and efficiency are her [read m](#)

NAPO-LA News

Look what our community is up to!

Growing NAPO-LA: In the spirit of growing our membership Regina Lark a

Connect with Us!



NAPO-LA Board of Directors



President
Regina Lark
A Clear Path
818.400.9592



Vice President
Susana Enriquez
Downsize and Get Organized
805.409.4638



Treasurer
Cari Dawson
Cari's Custom Organizing
323.600.4993



Secretary
Cynthia Smith
Your House in Order
310.721.1076



Director of Administration
Mary Anne Lantieri
Apparent Priority
818.314.2128

Christie Gelsomino invite you to join us when we host "meet/greet" [read more](#)

NAPO-LA Field Trip: Update on "Welcome NAPO to LA!" The committee is moving ahead with great ideas for fun, restaurants, and things to do in [read more](#)

Island Organizers: In Aug 2014, Donna D. McMillan & Karen Simon, both NAPO-LA Past Presidents & co-founders of [Island Organizers](#), were [read more](#)

We are pleased to share these email excerpts from Downtown Women Center staff and volunteers! The NAPO-LA team did an amazing job at DWC! The group of talented women were extremely friendly and did [read more](#)

2014-2015 MEMBERSHIP RENEWALS

ALL ABOUT RENEWALS

Fall is around the corner and it is annual dues renewal time at NAPO-LA. Go online at www.napola.org during the month of October and renew for another year of exciting events and opportunities.

Membership in NAPO-LA gives you unparalleled opportunities to build your business and take it to the next level. Take advantage of our continuing education, publicity, leadership training, support, professional [read more](#)

PARTNER WITH US!

Our Corporate Associate Members



[Kim DiLallo](#)
 (800) 642-6992



[Barb Schmit](#)
 (714) 328-7973



[Ken Gruberman](#)
 (818) 998-4477



[Lorna Ross](#)
 (310) 633-3570



[Evan Berger](#)
 (800) GO JUNK FREE
 (323) 633-0610



[Jason Cohen](#)
 (310) 618-8120



[Brian Thomas](#)
 (800) 525-6219



[Gus Gougas](#)
 (818) 232-7683



[Deirdre Doherty](#)
 (323) 377-4840



[Marisela Arechi](#)
 (310) 415-7799

Golden Circle

GOLDEN CIRCLE LISTSERV

Are you a member of the Golden Circle ListServ? Open only to Golden Circ



Director of Communications & Technology
Nancy Meck
Meck Organizing
 404.775.9492



Director of Marketing
Christie Gelsomino
Vision to Be Organized
 661.993.8291



Director of Membership
Tara Kenavan
21 Times
 818.358.3363



Director of Associate Membership
Marty Stevens-Heebner
Clear Home Solutions
 818.376.0125



Director of Professional Development
Leslie Haber
An Organized Life
 213.507.1389

members, this ListServ allows more seasoned professional organizers to network with each other. To get started, log into www.napo.net and go to the Golden Circle Page. In the second paragraph you will see a link for the [read more](#)

Volunteer - NAPO-LA SEEKING VOLUNTEERS

Staffing Opportunities at NAPO Conference, Los Angeles April 15 - 18
 Do you like to show people a good time? Would you like to meet NAPO members from all around the world? The annual NAPO conference will be held in our own backyard....at the Westin Bonaventure Hotel in downtown Los Angeles. We need NAPO-LA chapter volunteers to staff the Welcome Table share with visitors information about our city and chapter. Are you interested?

Please contact Janet Fishman at (213) 359-0389 or info@janetfishmanorganizer.com if you would like to volunteer for this very fun activity.

NAPO-LA Professional Organizers Learning Academy POLA PRESENTS

"What Every Organizer Should Know About Managing Emails"

[Register Me!](#)

- Are you constantly buried in email overwhelm no matter how many times you clear out your inbox?
- Want to learn the skills to take charge of your email once and for all?
- Inspired to teach clients how to have an organized email system in place but not sure where to start?

Productivity Specialist, Star Hansen, will teach you the skills and [read more](#)

ICD NEWS



The ICD Guide to Challenging Disorganization: A must-have guide for any professional organizer working with clients who struggle with the challenges of Chronic Disorganization!

The *ICD Guide to Challenging Disorganization*: For Professional Organizers a ground-breaking book in the field of organization. It is the first book to [read more](#)



Immediate Past President
Nadine Levy
Management 180
818.585.4828

Coordinators & Committee Chairs

For a complete list [click here.](#)

Membership

August New Members

Holly Martin - Holly Help
 Mary Love

Chapter Photo Albums

DTWC Organizing Project



Melina Kazarian, Mary Anne Lantieri, Toni Scharff,

See our chapter's pictures [here.](#)
 See our archived pictures [here.](#)

Membership

NAPO-LA Chapter Membership

October is renewal time!
[Visit our special Membership section](#)
 in this issue for all the info!

More info Please!

Advertising

Website Link

Clutter Support Group

CD CLIENTS - SUPPORT GROUP FOR L.A. CHAPTER MEMBERS

If you are working consistently and on an ongoing basis (at least one year or more) with chronically disorganized clients, you are invited to [read more](#)

NAPO-LA Neighborhood Groups

Burbank/Glendale/Pasadena Neighborhood Group: We met on September 13th at Standolyn Robertson's home, and talked about the emotional side of the job. Our next meeting is November 13th. [read more](#)

San Fernando Valley Neighborhood Group: Will meet on Sunday, November 16 from 11:00 am - 1:00 pm in Northridge at Janet Fishman's house [read more](#)

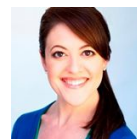
Many of the Neighborhood Groups hold informal bimonthly meetings throughout the Los Angeles area. A benefit of chapter membership, these [read more](#)

Newsletter: The Los Angeles Organizer

The Los Angeles Organizer is published bimonthly (January, March, May, July, September and November).

The newsletter is emailed to NAPO-LA members and associate members, NAPO national board members, and NAPO chapter presidents, and is available to the public on our website. All content copyrighted. All rights reserved.

NAPO-LA members are encouraged to contribute to this newsletter. For information [click here.](#)



Editor
 Laura Ellis
editor@napola.org

Proofreaders
 Toni Scharff
 Lorna Ross

\$25 NAPO-LA Members
\$35 Non NAPO-LA Members

Block Ad

\$35 NAPO-LA Members
\$45 Non NAPO-LA Members



NAPO Los Angeles

Mission Statement: NAPO-LA is the organizing industry leader committed to providing the public with resources; providing professional organizers with education and support; and providing related industry professionals with unique channels for th products and services.

NAPO-Los Angeles
PMB 134, 10573 W. Pico Blvd.
Los Angeles, CA 90064
Phone 213.486-.4477

The National Association of Professional Organizers, Los Angeles Chapter (NAPO-LA) is a legal entity separate and distinct from NAPO, Inc. (the National Assor of Professional Organizers) and is not entitled to act on behalf of or to bind NAPO, contractually or otherwise.

For questions on our disclosure policy, please contact our [Chapter President](#).



This email was sent to editor@napo-la.org by newsletter@napola.org | [Update Profile/Email Address](#) | Rapid removal with [SafeUnsubscribe™](#) | [Privacy Policy](#).



NAPO-LA | PMB 134 | 10573 W. Pico Blvd. | Los Angeles | CA | 90064