

At NAPO-LA, we never want you to receive unwanted emails from us. You're receiving this email because of your relationship with NAPO-LA. Please [confirm](#) your continued interest in receiving email from us.

You may [unsubscribe](#) if you no longer wish to receive our emails.

# THE LOS ANGELES ORGANIZER



November/December 2014

Volume 21, Issue 12

## In This Issue

- [NAPO-LA Calendar](#)
- [President's Message](#)
- [November Chapter Meeting](#)
- [Partner with Us](#)
- [Volunteer Opportunities](#)
- [NAPO-LA POLA](#)
- [ICD News](#)
- [Clutter Support Group](#)
- [Neighborhood Groups](#)
- [Membership NAPO-LA](#)
- [Newsletter Guidelines](#)

## NAPO-LA Calendar

- |                    |   |                    |                    |                                    |
|--------------------|---|--------------------|--------------------|------------------------------------|
| <b>November 13</b> | POLA <a href="#">Registration</a> Deadline                      | <b>November 17</b> | 12:30 pm           | Board Meeting                      |
| <b>November 13</b> | Neighborhood Group: <a href="#">Pasadena, Glendale, Burbank</a> |                    | 3:00 pm - 5:00 pm  | <a href="#">POLA Class</a>         |
|                    | 6:30 pm   |                    | (check-in 2:45 pm) |                                    |
| <b>November 16</b> | Neighborhood Group: <a href="#">San Fernando Valley</a>         |                    | 6:15 pm            | <a href="#">Chapter Meeting</a>    |
|                    | 11:00 am  |                    |                    |                                    |
| <b>November 16</b> | Neighborhood Group: <a href="#">Hollywood, West Hollywood</a>   | <b>December 19</b> |                    | <a href="#">DTWC Declutter Day</a> |
|                    | 11:00 am  |                    |                    |                                    |

There will not be a Chapter Meeting in December.  
Happy Holidays! We'll see you in January!

## President's Message

**Letting go of what we value:  
Tips to help our clients change their relationship to the things in their possession**

Regina F. Lark, Ph.D, CPO®, CPO-CD®

Our clients have many reasons for holding on to their stuff. The top three reasons are the original cost, emotional attachment, and the belief they may need it someday. When we listen to our clients we develop a deeper understanding about why letting go is so damn hard for some of them. What follows are [read more](#)

## NAPO-LA November Chapter Meeting

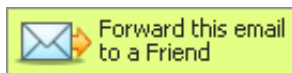
### Holiday Fun & Games!

Join us this Monday, November 17th - the ***third*** Monday of the month - for holiday fun and games!

Following the regular business portion of our chapter meeting, we will [read more](#)

## Partner with Us!

### Connect with Us!



NAPO-LA

NAPO National

## NAPO-LA Board of Directors



**President**  
**Regina Lark**  
**A Clear Path**  
**818.400.9592**



**Vice President**  
**Susana Enriquez**  
**Downsize and Get Organized**  
**805.409.4638**



**Treasurer**  
**Cari Dawson**  
**Cari's Custom Organizing**  
**323.600.4993**



**Secretary**  
**Cynthia Smith**  
**Your House in Order**  
**310.721.1076**



**Director of Administration**  
**Mary Anne Lantieri**  
**Apparent Priority**  
**818.314.2128**

## OUR CORPORATE ASSOCIATE MEMBERS (CAM)

Interested in a CAM membership? Contact [Marty Stevens-Heebner](#)



[Kim DiLallo](#)  
 (800) 642-6992

*Special thanks to Barb Schmit. We appreciate all you do for NAPO-LA!*



[Ken Gruberman](#)  
 (818) 998-4477



[Lorna Ross](#)  
 (310) 633-3570



[Evan Berger](#)  
 (800) GO JUNK  
 FREE  
 (323) 633-0610



[Jason Cohen](#)  
 (310) 618-8120



[Brian Thomas](#)  
 (800) 525-6219



[Gus Gougas](#)  
 (818) 232-7683



[Deirdre Doherty](#)  
 (323) 377-4840



[Marisela Arechiga](#)  
 (310) 415-7799



[Jeremy Suede](#)  
 (818) 451-8316



[Mary Wilcox](#)  
 (818) 692-0856



[Lester Wood](#)  
 (310) 454-2255



[Jedd Gold](#)

## Golden Circle

### GOLDEN CIRCLE LISTSERV

Are you a member of the Golden Circle ListServ? Open only to Golden Circle members, this ListServ allows more seasoned professional organizers to network with each other. To get started, log into [www.napo.net](http://www.napo.net) and go to the [read more](#)

## Volunteer - NAPO-LA

### SEEKING VOLUNTEERS

- Meeting Assistant: Works under Treasurer
- Neighborhood Group Leader: Burbank/Glendale Area
- Volunteers for Staffing Opportunities at NAPO Conference

[click here for full details](#)

## NAPO-LA

### Professional Organizers Learning Academy



**Director of Communications & Technology**  
**Susan Culligan**  
**Just About Organized**  
**Susan Culligan Web Design**  
 831.234.5520



**Director of Marketing**  
**Christie Gelsomino**  
**Vision to Be Organized**  
 661.993.8291



**Director of Membership**  
**Tara Kenavan**  
**21 Times**  
 818.358.3363



**Director of Associate Membership**  
**Marty Stevens-Heebner**  
**Clear Home Solutions**  
 818.376.0125



**Director of Professional Development**  
**Leslie Haber**

**POLA PRESENTS**

**"What Every Organizer Should Know About Organizer's Toolbox - Products & Work Kits"**

**Register Me!**

Sometimes the right product can make all the difference when organizing a client. This 2-hour interactive workshop will give organizers an increased knowledge of products that will make them even more valuable to their clients [read more](#)

**ICD NEWS**



***The ICD Guide to Challenging Disorganization***  
*A must-have guide for any professional organizer working with clients who struggle with the challenges of Chronic Disorganization!*



*The ICD Guide to Challenging Disorganization: For Professional Organizers* a ground-breaking book in the field of organization. It is the first book to [read more](#)

**Clutter Support Group**

**CD CLIENTS - SUPPORT GROUP FOR L.A. CHAPTER MEMBERS**

If you are working consistently and on an ongoing basis (at least one year or more) with chronically disorganized clients, you are invited to participate in an informal support group.

To RSVP or for further information email Jean Furuya at [Jean@TheOfficeJeanie.com](mailto:Jean@TheOfficeJeanie.com) or call (310) 316-1753.

**NAPO-LA Neighborhood Groups**

Neighborhood Groups: Many of the Neighborhood Groups hold informal bimonthly meetings throughout the Los Angeles area. A benefit of chapter membership, these offshoots of NAPO-LA offer education, networking and support. Check [read more](#)

**Membership**

**An Organized Life**  
213.507.1389



**Immediate Past President**  
**Nadine Levy**  
**Management 180**  
818.585.4828

**Coordinators & Committee Chairs**

See a complete list [here](#)

**Chapter Photo Albums**



*Regina Lark, Lisa Montanaro, Susan McKeiman at the NAPO-SFBA Conference*

See our chapter's pictures [here](#).  
See our archived pictures [here](#).

**Membership**

**NAPO-LA Chapter Membership**

Thanks for renewing!

There's still time!  
**Membership Renewal**  
available through November  
with a \$25 late fee.

[Welcome to our new members!](#)  
[See who they are here.](#)

Join NAPO-LA

**Advertising**

**Website Link**

\$25 NAPO-LA Members  
\$35 Non NAPO-LA Members

**WELCOME TO OUR NEW MEMBERS**

**September New Members**

Susan Culligan, Just About Organized

**September Meeting Stats**

Membership: 101  
Members: 30  
Visitors: 4

**October New Members in order of date joined**

Tracy Bowers, Organize with Tracy  
Julie Bobrick  
Ramona Creel  
JuliAnne DeChaine, Eddy & Schein, Inc.  
Jeremy Suede, I.O. Solutions  
Lester Wood, Senior Funding Advisors  
Mary Wilcox, Milan Cleaning Services

**October Meeting Stats**

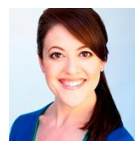
Membership: 103  
Members: 40  
Visitors: 9

**Newsletter: The Los Angeles Organizer**

*The Los Angeles Organizer* is published bimonthly (January, March, May, July, September and November).

The newsletter is emailed to NAPO-LA members and associate members, NAPO national board members, and NAPO chapter presidents, and is available to the public on our website. All content copyrighted. All rights reserved.

NAPO-LA members are encouraged to contribute to this newsletter. For information [click here](#).



**Editor**  
Laura Ellis  
[editor@napola.org](mailto:editor@napola.org)

**Proofreaders**  
Toni Scharff  
Lorna Ross

**Block Ad**

\$35 NAPO-LA Members  
\$45 Non NAPO-LA Members

Advertise  
with us

**NAPO Los Angeles**

**Mission Statement:** NAPO-LA is the organizing industry leader committed to providing the public with resources; providing professional organizers with education and support; and providing related industry professionals with unique channels for th products and services.

NAPO-Los Angeles  
PMB 134, 10573 W. Pico Blvd.  
Los Angeles, CA 90064  
Phone 213.486-.4477

The National Association of Professional Organizers, Los Angeles Chapter (NAPO-LA) is a legal entity separate and distinct from NAPO, Inc. (the National Association of Professional Organizers) and is not entitled to act on behalf of or to bind NAPO, contractually or otherwise.

For questions on our disclosure policy, please contact our [Chapter President](#).



This email was sent to editor@napo-la.org by [newsletter@napola.org](mailto:newsletter@napola.org) | [Update Profile/Email Address](#) | Rapid removal with [SafeUnsubscribe™](#) | [Privacy Policy](#).



NAPO-LA | PMB 134 | 10573 W. Pico Blvd. | Los Angeles | CA | 90064